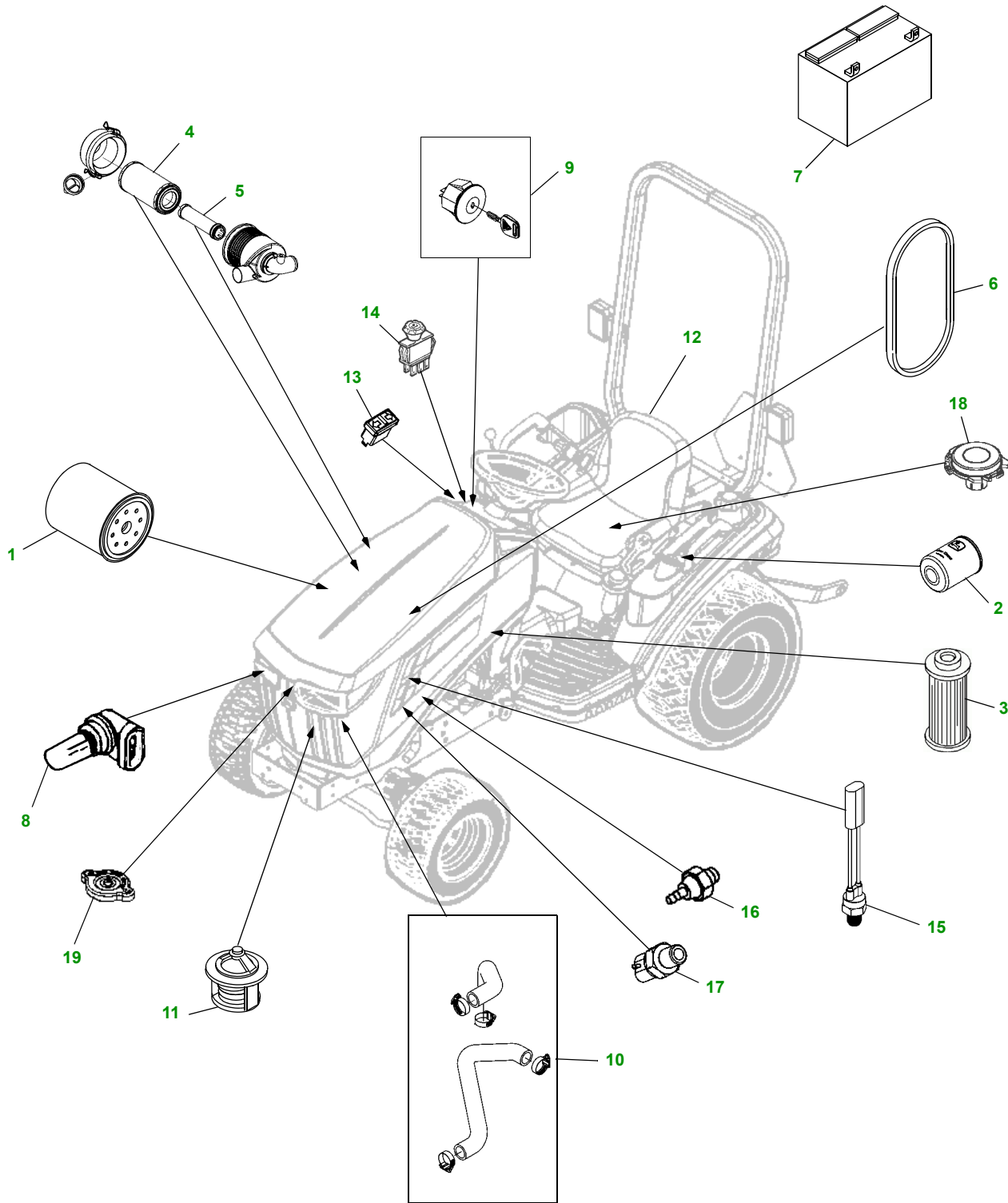


1023E



key	part no.	description	key	part no.	description
1	M806418	ENGINE OIL FILTER		LVU21722	RADIATOR HOSE (LOWER)
2	LVA16054	HYD FILTER		TY22467	HOSE CLAMP
3	M801101	FUEL FILTER ELEMENT	11	M811895	THERMOSTAT - 160°
4	M113621	AIR FILTER ELEMENT - PRIMARY	12	LVA14488	SEAT - SEAT SWITCH INCLUDED
5	M123378	AIR FILTER ELEMENT - SECONDARY	13	LVA12928	TURN SIGNAL SW
6	MIU800681	FAN BELT	14	AM118802	PTO SW
7	TY26498	BATTERY	15	AT85152	MBR PTO SW
8	R136239	HEAD LIGHT BULB	16	M809526	OIL PRESSURE SW
	AD2062R	TAILLIGHT BULB	17	MIA881067	NEUTRAL START SW
	AR48015	TAILLIGHT BULB	18	AM131968	SEAT SW
9	GY20680	KEY	19	M807428	RADIATOR CAP
	AM133596	SWITCH			
10	LVU21721	RADIATOR HOSE (UPPER)			

Parts Needed in First 250 hours of Operation

Qty	Part No	Item	Capacity	Change Interval in Hours
1	M806418	Oil Filter		200
1	TY22008	1 Gal Plus 50 15W40 Engine Oil	2.9 qt	200
2	LVA16054	Transmission Filter		50/200
2	TY6342	5 Gal JD Low Viscosity HyGard Oil	13.0 qt	50/200
3	TY6341	JD Multi Purpose SD Polyurea Grease		As Needed

"As Needed" Parts

Qty	Part No	Item
1	M113621	Air Filter - Primary
1	M123378	Air Filter - Secondary
1	M801101	Fuel Filter Element
1	MIU800681	Fan Belt
1	GY20680	Key
1	AM123508	Fuel Cap
1	TY26183	Grease Gun