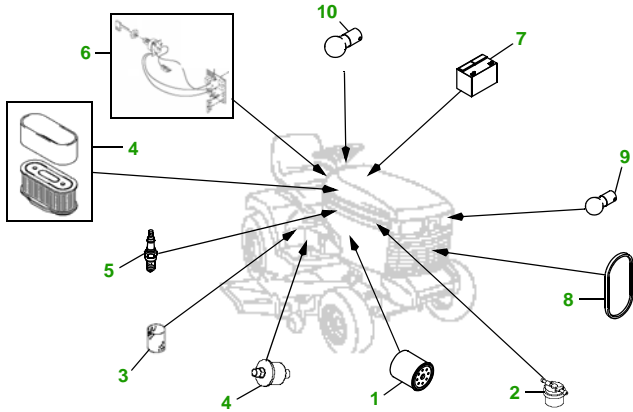


MAINTENANCE REMINDER SHEET

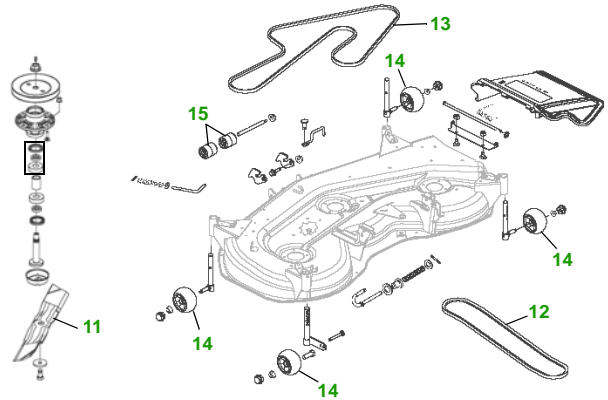
GX255 with 54C Deck

Garden Tractor



Tractor S/N

54" Convertible Deck



Deck S/N

| Key | Part No. | Description |
|-----|----------|--------------------------------------|
| 1 | AM107423 | ENGINE OIL FILTER |
| 2 | AM116403 | FUEL FILTER IN-LINE |
| 3 | M141977 | TRANSAXLE OIL FILTER |
| 4 | M140295 | FOAM FILTER ELEMENT |
| | M150403 | PAPER FILTER ELEMENT - EXTERNAL VENT |
| | M150949 | PAPER FILTER ELEMENT - INTERNAL VENT |
| 5 | M805853 | SPARK PLUG |
| 6 | AM131841 | KEY |
| | AM132500 | IGNITION MODULE |
| 7 | TY25881 | BATTERY (DRY) |

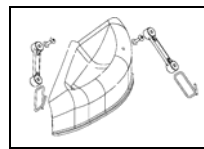
| Key | Part No. | Description |
|-----|----------|-----------------------|
| 8 | M127523 | BELT - TRACTION DRIVE |
| 9 | AD2062R | HEADLIGHT BULB |
| 10 | AR62407 | INSTRUMENT PANEL BULB |
| 11 | M143520 | BLADE - STANDARD |
| | M145516 | BLADE - MULCHING |
| 12 | M143019 | BELT - PRIMARY |
| 13 | M154960 | BELT - SECONDARY |
| 14 | AM125172 | KIT - GAGE WHEEL |
| 15 | M113955 | ROLLER |

Service Recommendations

| Qty | Part No | Item | Qty or Capacity | Change Interval in Hours |
|-----|----------|--|-----------------|--------------------------|
| 4 | AM107423 | Oil Filter | 1 | 25/50/100/200 |
| 1 | TY22076 | 2 1/2 Gal Turf Gard @ 10W30 Engine Oil | 1.6 qt | 25/50/100/200 |
| 2 | TY22000 | 1 Gal Low Vis Hygard | 5.0 qt | 250 |
| 1 | AM116403 | Fuel Filter | 1 | 200 |
| 2 | TY6341 | JD Multi Purpose SD Polyurea Grease | | As Needed |

"As Needed" Parts

| Qty | Part No | Item |
|-----|----------|--|
| 1 | M140295 | Foam Filter Element |
| 1 | M150403 | Foam Filter Element - External Vent Carb |
| 1 | M150949 | Foam Filter Element - Internal Vent Carb |
| 2 | M805853 | Spark Plug |
| 3 | M143520 | Blade - Standard |
| 3 | M145516 | Blade - Mulching |
| 1 | M127523 | Belt - Traction Drive |
| 1 | M143019 | Belt - Primary |
| 1 | M154960 | Belt - Secondary |
| 1 | AM131841 | Key |
| 1 | AMT1274 | Fuel Cap |
| 1 | TY130907 | Mower Deck Leveling Gauge |
| 1 | TY26183 | Grease Gun |



Mulch Kit BM20827

Dealer Name
Contact Name
Dealer Phone No



Home Maintenance Kit

| Unit | Kit Number |
|-------|-----------------------------|
| GX255 | LG249 FH601V |
| GX255 | LG250 FH601V S/N 140001— |

