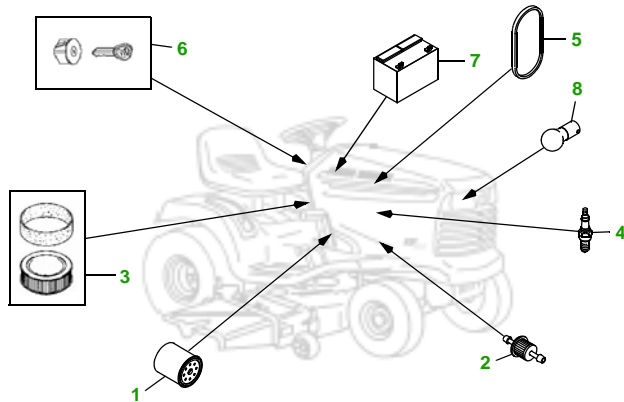


MAINTENANCE REMINDER SHEET

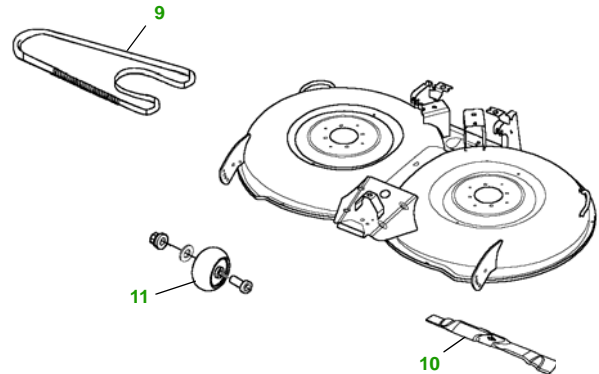
LT166 with 42M Freedom Deck

Lawn Tractor



Tractor S/N

42" Mulching Deck



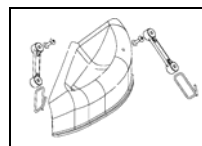
Deck S/N

| Key | Part No. | Description | Key | Part No. | Description |
|-----|-----------|-------------------------------|-----|----------|-------------------------------|
| 1 | AM125424 | OIL FILTER | 7 | AM132807 | IGNITION SWITCH (S/N 095001—) |
| 2 | AM116304 | FUEL FILTER - IN-LINE | 8 | TY25878 | BATTERY |
| 3 | LG272490S | AIR FILTER FOAM | 9 | AD2062R | HALOGEN HEADLIGHT BULB |
| 4 | M78543 | SPARK PLUG | | M127926 | BELT- TIMING (S/N —095000) |
| 5 | M126009 | BELT - TRACTION DRIVE | | M150717 | BELT- TIMING (S/N 095001—) |
| 6 | GY20680 | KEY - PADDED | | M128733 | BELT - DRIVE |
| | AM132808 | IGNITION SWITCH (S/N —095000) | 10 | AM130172 | BLADE - KIT |
| | | | 11 | AM116299 | GAGE WHEEL |

Service Recommendations

"As Needed" Parts

| Qty | Part No | Item | Qty or Capacity | Change Interval in Hours | Qty | Part No | Item |
|-----|------------|---|-----------------|--------------------------|-----|----------|----------------------------|
| 6 | AM125424 | Engine Oil Filter | 1 | 5/50/100/150/200/250 | 2 | M78543 | Spark Plug |
| 2 | TY22076 | 2 1/2 GAL. Engine Oil Turf Gard © 10W30 | 1.6 qt | 5/50/100/150/200/250 | 1 | M126009 | Belt - Traction Drive |
| 2 | AM116304 | Fuel Filter | 1 | 100/200 | 1 | M128733 | Belt - Mower Drive |
| 2 | LG272490S | Air Filter- Foam | 1 | 100/200 | 1 | M127926 | Belt -Timing (S/N —095000) |
| 2 | LG394018JD | Air Filter- Paper | 1 | 100/200 | 1 | M150717 | Belt -Timing (S/N 095001—) |
| 2 | TY6341 | JD Multi Purpose SD Polyurea Grease | | As Needed | 1 | AM130172 | Blade - Kit |
| | | | | | 1 | GY20680 | Key Padded |
| | | | | | 1 | AM122880 | Fuel Cap |
| | | | | | 1 | TY15272 | Mower Deck Leveling Gauge |
| | | | | | 1 | TY15410 | Grease Gun |



Mulch Kit N/A

Dealer Name
Contact Name
Dealer Phone No



Home Maintenance Kit

| Unit | Kit Number |
|-------|------------|
| LT166 | LG190 |

